



COPY

400 East Military Avenue, Fremont, NE 68025-5141

January 29, 2020

Agenda Item # 25C
Date 2-12-2020

RE: Request for Preliminary Plat and Final Plat

Dear Property Owner:

You are hereby advised that the City of Fremont has received the following application(s) by Mesner Development Company for:

- A Preliminary Plat generally consisting of 20 lots generally located south of 29th Street east of Fountain Springs Drive.
- A Final Plat generally consisting of 20 lots generally located south of 29th Street east of Fountain Springs Drive.

The City Council will hold a public hearing on these items on February 11, 2020 at 7:00 pm. The meeting will be held in the City Council Chambers on the second floor of the Fremont Municipal Building 400 E Military.

If you would like more information, you are encouraged to contact the Planning Director, Jennifer Dam at 402-727-2641 or jennifer.dam@fremontne.gov.

You may appear at the public hearing to provide your comments or submit them in writing prior to the public hearing to the City Council in care of the City Clerk at 400 E Military Ave, Fremont, NE 68025 or by fax to 402-727-2659.

The staff report and recommendation will be available at the City Clerk's office on February 7th after 3:00 PM. The City Council Agenda and staff reports will also be available on the City's website at that time, www.fremontne.gov.

Sincerely,

pp. Tina Manding
(on behalf of)
Tyler Ficken,
City Clerk

Attachment: Schematic drawing

Cc: Leanne Ritter, Advanced Consulting Engineering Services
Mesner Development Co.
Fremont School Board
Dodge County Board

2020 FEB -4 AM 3:29
RECEIVED
Dodge Co Highway Dept.



HIDDEN BROOK SUBDIVISION

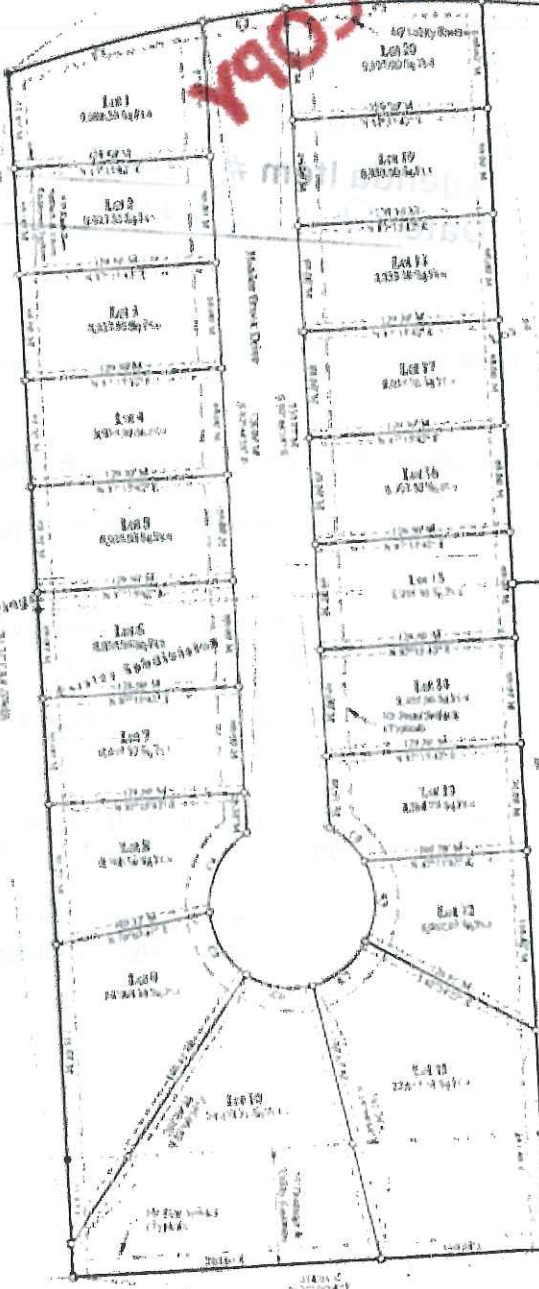
A Subdivision of Lot 1 and Lot 2 of Section 34, Township 34N, Range 10W, in the City of Portland, Oregon, as shown on the attached plat.

Lot 1, Section 34, Township 34N, Range 10W

Tract A, Lot 2, Section 34, Township 34N, Range 10W

Lot 2, Section 34, Township 34N, Range 10W

Lot 3, Section 34, Township 34N, Range 10W



Lot Data		
21. Area: 0.1250 Acres Front Length: 12.00' Side Length: 12.00' Rear Length: 12.00'	22. Area: 0.1250 Acres Front Length: 12.00' Side Length: 12.00' Rear Length: 12.00'	23. Area: 0.1250 Acres Front Length: 12.00' Side Length: 12.00' Rear Length: 12.00'
24. Area: 0.1250 Acres Front Length: 12.00' Side Length: 12.00' Rear Length: 12.00'	25. Area: 0.1250 Acres Front Length: 12.00' Side Length: 12.00' Rear Length: 12.00'	26. Area: 0.1250 Acres Front Length: 12.00' Side Length: 12.00' Rear Length: 12.00'
27. Area: 0.1250 Acres Front Length: 12.00' Side Length: 12.00' Rear Length: 12.00'	28. Area: 0.1250 Acres Front Length: 12.00' Side Length: 12.00' Rear Length: 12.00'	29. Area: 0.1250 Acres Front Length: 12.00' Side Length: 12.00' Rear Length: 12.00'
30. Area: 0.1250 Acres Front Length: 12.00' Side Length: 12.00' Rear Length: 12.00'	31. Area: 0.1250 Acres Front Length: 12.00' Side Length: 12.00' Rear Length: 12.00'	32. Area: 0.1250 Acres Front Length: 12.00' Side Length: 12.00' Rear Length: 12.00'

Section 34, Township 34N, Range 10W

Section 34, Township 34N, Range 10W

Section 34, Township 34N, Range 10W

Section 34, Township 34N, Range 10W