

Dodge County Emergency Management Report

Emergency Management Director
Thomas Smith

This report highlights activities, accomplishments and an overall review of the Emergency Management Program

Dodge County
Emergency Management
Fremont, NE
402.727.2785
4/12/2020



Contents

Message from the Director.....	1
Emergency Management in Dodge County	2
Community profile	2
Mission.....	2
County Emergency Management Services	2
Executive Summary	3
Incident Response	3
Planning, Exercise, Training	4
Hazard Mitigation	5
Budgetary Review	6
General Fund	6
Emergency Management (693) Budget Details.....	6
Emergency Management Program Grant (EMPG).....	6
LEPC Budget (695) Budget Details	7
Homeland Security Grants.....	7
Hazardous Materials Emergency Planning Grant (HMEP)	7
Disaster 4420-DR.....	7
Program Reports.....	8
Emergency Management Program	8
Emergency Operations Center.....	8
Incident Command System Training & Incident Management Team Development.....	9
Public Information & Outreach	9
Emergency Warning Systems.....	10
Planning, Exercise and Training	10
Hazard Mitigation Projects	11
Regional and Statewide Interoperable Communications	12
FirstNET	12
Regional Coordination	12
ECPET.....	12
Medical Response System.....	13
Local Emergency Planning Committee (LEPC)	14
Citizen Corps Council & Long Term Recovery Group	14
Greater Dodge County-Long Term Recovery Group (GDC-LTRG).....	15
Citizen Corps Council (CERT)	15

Message from the Director

Prior to this July 23rd, 2018 Dodge County Emergency Management functions were done by a separate entity through an interlocal agreement between three counties. Since this date I have worked to establish Dodge County Emergency Management as a key resource within the County and East Central Homeland Security Region. Many administrative tasks have taken place necessary to establish emergency management as a county agency recognized by State and Federal, and Private partners. In August of 2018, an assessment of 32 core capabilities identified in the National Preparedness Goal was completed. Capability gaps were identified and prioritized.

In early April 2019, the County's Emergency Operations Center (EOC) was completed. The benefits of having this space with capabilities to coordinate and share information was evident in the November 2019 EOC exercise and the 2020 February Ice Jams. The EOC has become a benefit to the county, hosting several other department's meetings in addition to being the meeting and training area for emergency management.

Numerous challenges have occurred over the past year and half. In March 2019, the largest natural disaster in the State occurred. Many areas of Dodge County were isolated due to flood waters, initial cost estimates to County infrastructure exceeded \$19 million dollars. In February 2020, ice jams caused flooding again. At the end of February 2020, the first Nebraska travel related COVID-19 positive case had attended an event in Dodge County prompting an immediate coordinated response effort. Today, County Emergency Management is supporting the COVID-19 Pandemic response with Public Health, First Responders, Elected Officials, Non-Governmental Organizations, and Private partners. These challenges have strengthened emergency management's partnership within the county.

Emergency management is a team effort. As an office of one, emergency management relies heavily on volunteers and other departments to successfully function. In the coming year, emergency management will continue to work on ways to improve our ability to respond to, recover from, and mitigate against any disaster that may affect the residents of Dodge County. Effective emergency management practices include learning, collaborating, and being adaptive, as such, I will strive to make continuous improvement and use our resources efficiently and responsibly.



Thomas Smith
Director, Dodge County Emergency Management

Emergency Management in Dodge County

Community profile

Dodge County is located in eastern Nebraska and is bordered by Burt, Washington, Douglas, Saunders, Colfax, and Cuming Counties. The total area of Dodge County is 543 square miles. The Platte River forms the southern border of the county. The Elkhorn River crosses a northern portion of the county eventually turning south forming the eastern border with Washington County. The northern portion of the county is in the rolling hills topographic region of Nebraska, while the southern portion of the county is the valleys topographic region. The vast majority of the land is used for agricultural production. The combination of numerous river and streams combined with the topography of the county and location of the major population centers presents a unique emergency planning and response challenge. Dodge County has experienced, or is threatened by, a wide array of natural disasters, such as, hail, floods, tornadoes, winter storms, and technological emergencies, such as dam failures, and hazardous material incidents. Planning scenarios must also include the possibility of agricultural disease and criminal acts.

Mission

The mission of the Dodge County Emergency Management Program is to provide integrated and comprehensive emergency management services necessary to protect Dodge County from all hazards in a cost-effective, implementable, and sustainable manner.

County Emergency Management Services

- Mitigation of and planning for large-scale, all-hazards emergencies and disasters.
- Coordination of large-scale emergency and disasters.
- Development, maintenance and execution of the County's Emergency Operations Plan.
- Liaison to local, county, state and federal partners.
- Management of resources to assist responders and the affected population.
- Administration of federal and state emergency and disaster grant funding.
- Conduct of community education and training.

Executive Summary

Incident Response

The March 2019 flooding event was an estimated, 500-year flood. Beginning Wednesday, March 13, 2019, a change in the weather temperature, a rainstorm, frozen ground, thick river ice, and high river levels lead to widespread flooding across Dodge County. For five days, multiple roadways and bridges (State and County) were inundated, with many washed out completely. Multiple reports of levees being overtopped and breached were reported. The Platte River, Logan Creek, Maple Creek, Elkhorn River, and Pebble Creek all reached flood stage. The Elkhorn

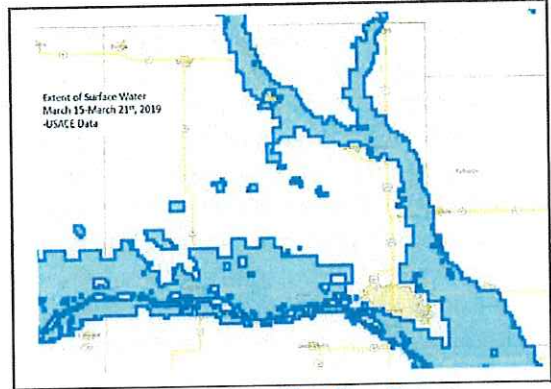


Figure 1: 2019 Flooding, Extent

River was forecasted to stay above flood stage until Saturday, March 16 and the Platte River was forecasted to stay above flood stage until Tuesday, Source: Dodge County Emergency Management March 19. During this time First Responders and volunteers assisted in evacuating residents while communities sandbagged areas of concern. 20,770 total calls from 23 emergency evacuation notifications were sent out to residents and businesses using the Dodge County Emergency Notification System. By late Wednesday evening residents along Ridge Road and Emerson Estates were evacuated. The Village of Winslow was completely flooded by the Elkhorn River and evacuated the morning of March 14. On Friday, March 15 at 10:15 am water began overtopping the cutoff ditch near Highway 30, threatening northwest Fremont. Flood inundation model maps showed that this water had the potential to damage critical infrastructure including the county's only hospital, the Fremont Airport, and four assisted living facilities. The County Roads department conducted 24-hour flood fighting operations along Highway 30 to slow the flow of water into the area. By 11:15 am on March 15th, all state highways into Fremont were closed. Flood waters damaged agricultural land, unincorporated areas, SIDs, county roads and bridges. The total initial estimate for damage just to county roads and bridges was over \$19,000,000. Total estimates of damage was \$30 million.



Figure 2: Elkhorn River Ice Jam

February 2nd 2020 an ice jam occurred north west of Scribner in the Elkhorn River near the State Highway 275 bridge. While a common event throughout the years, the subsequent flooding in low land areas and the state recreational area, drew substantial media coverage and fueled public fears of a repeat of the 2019 flooding. Further complicating the flooding already occurring, a major ice jam occurred on the Platte River February 15th. This ice jam occurred west of Fremont. Shelters were opened for residents of Big Island and Rod and Gun areas as residents were asked to voluntarily evacuate. Over the course of the flooding, Fremont Rural Fire Department rescued residents from

Big Island, Rod and Gun Club, and Lake Timberwood. Sixty total calls from three emergency telephone notifications were sent to residents along the Platte River. The flooding at the Rod and Gun Club worsened as a temporary repair to a private levee damaged during the 2019 flooding breached. The Platte River began flowing into a private lake undermining County Road 19, threatening the State Lakes. The US Army Corp of Engineers were requested twice to provide technical expertise. A collaborative effort to use an innovate helicopter technique to break existing ice in the river, reinforce County Road 19, and make temporary repairs along the damaged levee slowed flood waters, eventually warmer temperatures melted the ice without further action in both rivers. By February 26th, 2020 both ice jams had melted, releasing river water within its banks.

In June 2019, Dodge County Emergency Management began working with Three Rivers Public Health Department on Pandemic Planning within Dodge County. In January, coordination between Emergency Management and Three Rivers Public Health to begin exercising the plans with the community. Three Rivers Public Health began surveillance and sending situational updates on corona virus 2019 (COVID-19) in January 2020. February 28th, 2020 an individual that was an eventual confirmed case of COVID-19 attended a large event within Dodge County. March 25th, 2020 Dodge County was placed under a Directed Health Measure. The County Mass Notification System was used to send a Wireless Emergency Alert throughout Dodge County to notify residents of the health measure. As with all incidents, County Emergency Management supports the Incident Commander with resources, guidance, planning, and coordination.

Planning, Exercise, Training

An aggressive calendar of planning, training and exercise events provided agencies within Dodge County and partners with considerable improvements in their own practices and procedures, while building and improving organizational relationships. Trainings, conferences, and exercises Dodge County Emergency Management facilitated or participated in include:

- ICS 300: Intermediate ICS for Expanding Incidents (3 classes)
- ICS 400 Advcd ICS-Complex Incidents (2 classes)
- Active Threat Response Training
- USACE Flood Fight Training
- Lo449, Incident Command System (ICS) Train-the-trainer
- Dodge County Health Care System Workshop
- ICS 402: ICS Overview for Executives/Senior Officials,
- EOC Knowledge Center Training
- G191 ICS/EOC Interface
- Ebola Table-top Exercise
- Mass Warning and Notification System Training to dispatch
- Local Emergency Planning Committee (LEPC) Conference
- Procurement under FEMA awards
- FEMA Disaster Portal Training
- Integrated Weather Warning Team Workshop
- Omaha Health Care Coalition response planning workshop
- Integrated Weather Warning Team Workshop
- Volunteer Reception Center
- AWR209 Public Information Officer
- Damage Assessment System Training

Hazard Mitigation

Revisions for Both Multi-jurisdictional Hazard Mitigation Plans began in the last 18 months. Emergency Management participated in both revisions with final edits submitted for the Lower Elkhorn Natural Resource District Multi-Jurisdiction Hazard Mitigation Plan in November 2019 and final edits submitted to Lower Platte North Natural Resource District Multi-Jurisdiction Hazard Mitigation Plan in April 2020. Following the flooding, County Emergency Management worked with multiple jurisdictions to submit 404 mitigation projects to the State Task Force. Dodge County had multiple mitigation projects selected by the State's Task Force. Projects included acquisition of private properties, construction of private properties, river gauge acquisition, and a drainage study. At the direction of the County Board, in February 2020 emergency management began working on the acquisition and construction program. This program is still ongoing with estimated application submission in June 2020.

Budgetary Review

The budget for the Emergency Management Department and its programs features a combination of County General Fund contributions and various grant awards. Expenses are assigned to the most appropriate and available funding source.

General Fund

The General Fund provides funds for the majority of Emergency Management programs, including emergency management department expenses, and Local Emergency Planning Committee (LEPC)/ Citizen Corps.

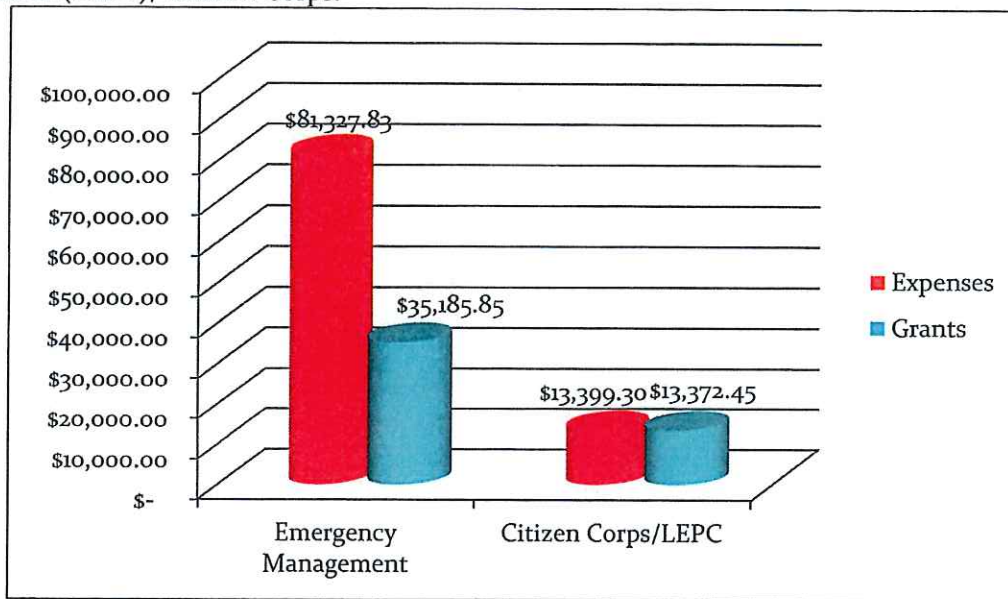


Figure 2: General Fund FY2018 (July 2018 to Mar 2019)

Emergency Management (693) Budget Details

The Emergency Management budget includes costs for one FTE, operational expenses, and new equipment. Operational expenses include maintenance contracts for emergency warning systems, equipment, operational systems, and supplies. The Emergency Management Program is supported by a series of Federal grants, primarily the Emergency Management Program Grant (EMPG)¹, administered by NEMA². The FY2018 large expenditure was the purchase of a County Emergency Management Vehicle.

Emergency Management Program Grant (EMPG)

The EMPG provides resources to assist state and local governments to sustain and enhance all hazards emergency management capabilities. Emergency management agencies have the opportunity to use EMPG funds to further strengthen their ability to support emergency

¹ <https://www.fema.gov/emergency-management-performance-grant-program>

² <https://nema.nebraska.gov/preparedness/grants>

management activities while simultaneously addressing issues of national concern as identified in the National Priorities of the National Preparedness Guidelines. EMPG has a 50% Federal and 50% local cash or in-kind match requirement. In FY2018, Dodge County Emergency Management received \$35,185.85 in EMPG funding to sustain the Emergency Management Program. EMPG funds were used to offset salary and benefit costs.

LEPC Budget (695) Budget Details

The LEPC budget provides for all expenses of the LEPC and the Citizen Corps Programs. Revenues collected in this budget include grant reimbursements from programs like Citizen Corps and the Hazardous Materials Emergency Planning (HMEP) grants. In FY 2018 Emergency Management received \$717.15 in HMEP grants, \$7629.80 Citizen Corp Grant, and \$5025.50 from City of Fremont for mass warning and notification payment agreement. In FY2019, Dodge County Emergency Management, through the LEPC collaboration, received \$3,395.00 from CF Industries to purchase Weather Stations to provide real-time data to EOC and 911 Center. In addition, \$1500.00 was used to enhance Amateur Radio Communications in the EOC. In general, the majority of expenses from this budget are reimbursed in part or whole by grants.

Homeland Security Grants

Homeland Security Grants are managed by a multi-county Planning Exercise & Training (PET) Region established by the State of Nebraska. Counties in Dodge County belong to the East Central Planning Exercise and Training Region (ECPET). Grant funds are allocated according to local needs that comply with State and National funding priorities. In recent years, the Homeland Security Grant has connected each County's Public Safety Answering Point/911 (PSAP) to the Nebraska Radio Interoperability Network (NRIN), as well as regular support to radio interoperability equipment allowing the PSAP dispatcher to monitor common frequencies available to agencies throughout the state. Grant Funding for Citizen Corp Program is allocated in similar process as all Homeland Security Grant projects within the State of Nebraska.

Hazardous Materials Emergency Planning Grant (HMEP)

Hazardous Materials Emergency Planning (HMEP) grants are used to develop, improve, and implement emergency plans; train public sector hazardous materials (hazmat) emergency response employees to respond to accidents and incidents involving hazardous materials in transportation; determine flow patterns of hazardous materials within a state and between states; and determine the need within a state for regional hazardous materials emergency response teams. HMEP Grant supports administrative functions of each county LEPC.

Disaster 4420-DR

Dodge County Emergency Management was the authorized department to collect and submit 2019 flood costs for non-highway department expenses incurred by the County. Projects managed by the emergency management office included other department's overtime and travel, EOC expenses, damages to 935 S Schneider county building, and emergency work to a ditch bank. The final FEMA meeting for the flood projects was held April 17th, 2020. Costs managed by emergency management totaled \$55,198.74, the county received \$52,192.65 from FEMA. Emergency Management also supported the County Highway Department projects, submitting \$317,187.91 donated resources for both applicants. These funds offset local cost share for submitted FEMA projects.

Program Reports

Emergency Management Program

The Nebraska Emergency Management Act³ states that elected officers of local government are responsible for ensuring that emergency management services are provided to their citizens. This includes a requirement to establish a local emergency management organization at the city, village, county or interjurisdictional level. Dodge County Emergency Management Program is based upon standards established by NFPA Standard 16007 and the Emergency Management Accreditation Program (EMAP). These elements include:

- Administration & Finance
- Laws & Authorities
- Hazard Identification and Risk Assessment
- Hazard Mitigation
- Prevention & Security
- Planning
- Incident Management
- Resource Management & Logistics
- Mutual Aid
- Communications & Warning
- Operations & Procedures
- Facilities
- Training
- Exercises, Evaluations & Corrective Actions
- Crisis Communication & Public Information



Emergency Operations Center

EOC hosted
events:
#Meetings-34
#Trainings-15
#Attendees-282

Dodge County Emergency Management now has a single designated Emergency Operations Center (EOC) to provide the direction and coordination of resources by agency representatives from each of our major emergency partners. The EOC is organized to operate similar to the Emergency Support Function (ESF) model used by FEMA and NEMA. FEMA defines ESFs as “mechanisms for grouping functions most frequently used to provide Federal support to States and Federal-to-

Federal support, both for declared disasters and emergencies under the Stafford Act and for non-Stafford Act incidents.” As Federal, State and local resources are coordinated in a common ESF framework, a “resource conduit” of sorts is maintained whereby agencies with related duties and resources are easily connected for more efficient communication between the different levels of government. To that end, Dodge County Emergency Manager has explored various ways to establish and maintain an EOC. In the past 18 months, Dodge County Emergency Management has worked with partners to share EOC and Communications equipment; this includes a mobile communications center use agreement with Platte County.

³ <https://nema.nebraska.gov/sites/nema.nebraska.gov/files/doc/nebraska-emergency-management-act.pdf>

Incident Command System Training & Incident Management Team Development

Dodge County Emergency Management is continuing its efforts to develop a Type 4 All-Hazards Incident Management Team (IMT)⁴ within Dodge County, regional, and with East Central PET. The IMT is team of trained emergency response professionals that will be specifically prepared to gather during large and uncommon incidents and events to coordinate our local response. IMT members will be prepared to fill specific rolls in the incident command structure and perform the necessary ICS functions of Command, Operations, Logistics, Planning, Finance & Administration, Public Information and Liaison. The IMT will be multi-agency team of 9-15 trained personnel that responds to incidents that are typically contained within a few operational periods. Each ICS position will have people trained for that position in order to allow for the rotation of staff, redundancy of skill sets, and continuity of the team. The IMT may be dispatched to manage or help manage incidents requiring a significant number of local and mutual aid resources. Incidents that a IMT may be utilized at include severe weather incidents and their cascading impacts, major structure fires, multi-vehicle crashes with multiple patients, armed robbery operations, or a hazmat spill. The IMT may also be used at public events such as the County Fairs, and events along the River.

Some local first responder personnel have received advanced ICS training, but none have attended ICS position specific trainings. In the Fall of 2019, Emergency Management sent a volunteer to the Logistics Section Chief Training. Future efforts to develop this IMT will include exercising the IMTs as outlined in the Dodge County Emergency Management 5-year training and exercise plan.

ICS Training:
#Trainings-6
#Attendees-73

Public Information & Outreach

Dodge County Emergency Management is committed to informing and empowering the public in order to encourage personal preparedness. Dodge County Emergency Management does this through:

1. Public education and training sessions,
2. Sponsoring volunteer opportunities through Citizen Corps programs, and
3. Aggressive information sharing on social media (Facebook, Twitter).

Dodge County Emergency Management uses a diverse set of venues in order to provide public information to the widest possible audience. Dodge County Emergency Management provides presentations to local organizations and groups and sponsors regular training sessions such as CERT and Storm Spotting.

Presentations

- Pioneer Amateur Radio Club
- Nazarene Church Pre School Presentation
- Fremont Area Young Professionals
- UNL-Servicship-African Ambassadors
- Nebraska Wellhead Protection Network
- Fremont Rotary Club
- Dodge County Long-Term Recovery Group
- Cosmos Club
- UNO-Disaster Response and Recovery Class
- Kiwanis Club

⁴ https://www.usfa.fema.gov/training/imt/imt_overview.html

- NET-Flood Panel

- COVID-19 Community Panel

Emergency Warning Systems

Since September of 2018, Dodge County has contracted with AlertSense to provide internal and public mass notifications. Through AlertSense, Dodge County Emergency Management has the ability to notify internal staff and volunteers, as well as residents who have voluntarily registered for wireless alerts, including voice, text or email. In addition to wireless phone alerts, the AlertSense system provides access to FEMA's Integrated Public Alert Warning System (IPAWS). Federal, State, territorial, tribal and local alerting authorities can use IPAWS and integrate local systems that use Common Alerting Protocol standards with the IPAWS infrastructure. IPAWS provides public safety officials with an effective way to alert and warn the public about serious emergencies using the Emergency Alert System (EAS), Wireless Emergency Alerts (WEA), the National Oceanic and Atmospheric Administration (NOAA) Weather Radio, and other public alerting systems from a single interface. Dodge County Emergency Management offers this capability to PSAPs, Sheriff's Office, City Administrators, and First Responders.

In addition to AlertSense, Dodge County Emergency Management supports municipal, and fire district outdoor warning siren projects. Dodge County Emergency Management reached out to community clerks, administrators, and fire chiefs to gauge interest in a siren replacement project. No sirens are owned or maintained by Dodge County. All sirens are owned, maintained, and operated by a municipality or fire district. Dodge County Emergency Management does not have operational control for any sirens within the county.

Planning, Exercise and Training

Maintaining a regular schedule of Planning, Exercises and Training (PET) opportunities is a primary mission of Dodge County Emergency Management. The process of maintaining a regular cycle of PET activities will allow local agencies to routinely update their plans and procedures, increase their technical skills and capabilities, and demonstrate the efficacy of their training through exercises. Exercise and training is outlined in the multi-year training and exercise plan. Each of these PET activities requires close and regular coordination with our local partners and each exercise is typically preceded by 6 months to a year of planning and training.

The 2019 County EOC Functional Exercise was developed to test the County's ability to utilize best practices developed from the March 2019 flooding. More specifically, the purpose of the exercise was to apply implemented corrective actions from the March 2019 Flood After Action Report/Improvement Plan. This included testing the new EOC site and information management systems adopted by County Emergency Management. Twenty-three different organizations participated in the Exercise.



Figure 3: 2019 EOC Exercise

November 2019 Dodge County Emergency Management worked with the Nebraska Public Policy Center to enhance School Emergency Operations Plans. A collaborative workshop was held introducing School Officials with respective emergency management personnel discussing issues faced during disasters. Further meetings were held with Educational Service Unit #2 to discuss and collaborate on school emergency planning. Dodge County Emergency Management is developing an internal process to meet the schools needs to develop comprehensive security and safety programs.

In 2017, new Center for Medicare and Medicaid Services (CMS) emergency planning requirements took place for Long Term Care Facilities and Assisted Living Facilities. These facilities are now required to develop emergency plans with their local emergency management office and exercise them yearly. Dodge County Emergency Management has assisted local facilities with planning reviews and exercise development. In Spring 2019, Dodge County Emergency Management coordinated a workshop to be held with health care partners to develop and enhance their plans.

Hazard Mitigation Projects

Hazard mitigation is the effort to reduce loss of life and property by lessening the impact of disasters. It is most effective when implemented under a comprehensive, long-term mitigation plan. Local governments engage in hazard mitigation planning to identify risks and vulnerabilities associated with natural disasters and develop long-term strategies for protecting people and property from future hazard events. The 2019 Hazard Mitigation Planning process identified the following top hazards for Dodge County;

- Agricultural Animal and Plant Disease
- Chemical Spills (Transportation)
- Dam Failure
- Flooding
- Levee Failure
- Tornadoes

Dodge County Emergency Management has collaborated on, completed, and submitted updated documentation for projects within Dodge County. Multiple mitigation projects have been identified. Projects under the 404 Mitigation Program have a cost share of 75% Federal and 25% local. These projects were approved by the Governor's Task Force for Disaster Response to submit to FEMA

Project	Estimated Costs	Approved
Floodplain Management Acquisition and Construction Program, this project is intended to decrease the number of repetitive loss structures and substantially flood-damaged structures in the floodplain	\$812,575.00	Y
Project-Stream Gauge near Highway 77 Bridge South of Fremont to monitor Platte River.	\$18,200.00	Y
Drainage study conducted to identify and prioritize improvements to address site specific localized flooding/ drainage problems in Elkhorn Drainage District	\$800,000.00	Y

Regional and Statewide Interoperable Communications

The Emergency Management Department is actively involved in a number of regional and statewide projects contributing to communications interoperability between agencies, counties and with the State of Nebraska. In November 2018, Dodge County Emergency Manager met with other East Central PET region representatives, NEMA, and a contractor to finalize draft of the East Central Tactical Interoperable Communication Plan. The plan is intended for use by first responders and may be used by governmental or non-governmental organizations and personnel requiring communications or coordination during an incident or planned event.

FirstNET

A mandate of the Middle-Class Tax Relief and Job Creation Act of 2012 created the First Responder Network Authority (FirstNet)⁵ as an independent authority within the National Telecommunications & Information Administration (NTIA). Their charge is to provide emergency responders with the first high-speed, nationwide network dedicated to public safety. The State and Local Implementation Grant Program (SLIGP) was funded to assist the states with the information sharing, stakeholder identification and planning activities necessary at the local and state levels to provide FirstNet with the information they will need to design and build this network. The State of Nebraska has initiated a three-year planning project funded by the National Telecommunications and Information Administration (NTIA) through the State and Local Implementation Grant Program (SLIGP). The purpose of the grant is to assist Nebraska and its local jurisdictions with the planning phase of this project in identifying their broadband needs for the build out of this Nationwide Public Safety Broadband Network. Half of the grant funds are retained to be used for the states data/infrastructure information collection portion of the grant. All of which will help with the state in consultation with FirstNet in the design of the Network in Nebraska to create a design plan for FirstNet to deliver to the Governor. When complete, the FirstNet system will provide public safety agencies with high speed data which can contribute to effective statewide access for mobile terminals, VOIP communications, interagency information sharing, 911 system sharing between PSAPs, and much more. In August 2017, Governor Ricketts notified FirstNet that the State of Nebraska will Opt-In and have FirstNet and AT&T build out the network across our state. Dodge County emergency management is utilizing the FirstNET system.

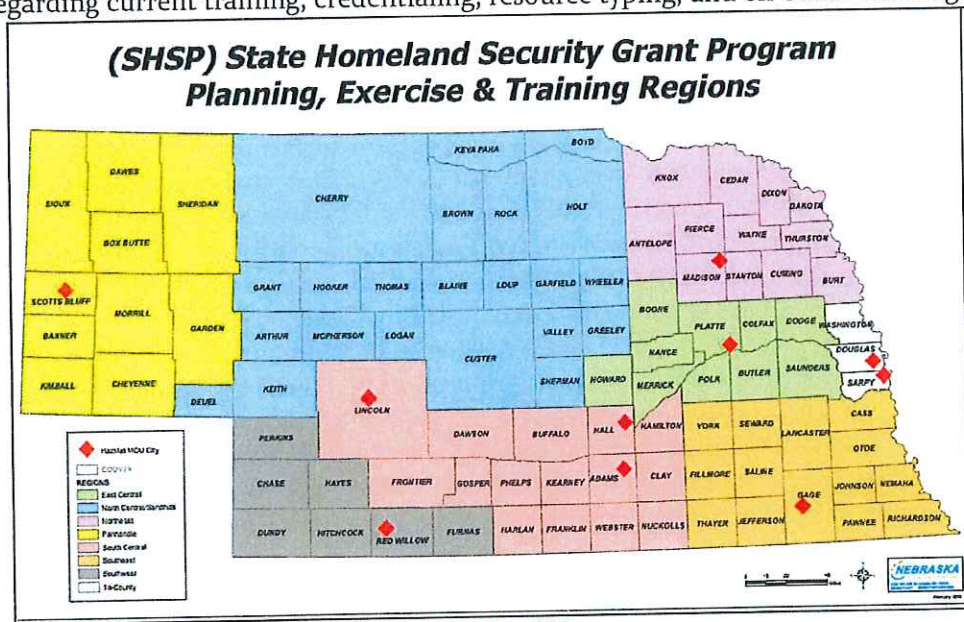
Regional Coordination

ECPET

Dodge County Emergency Management plays an active role in a number of regional emergency planning efforts in order to establish economies of scale, overcome geographical boundaries and logistical challenges, and to establish valuable working relationships with neighboring jurisdictions. The East Central Planning Exercise and Training Region (ECPET) was established by the State of Nebraska in 2007 and includes 10 counties from Howard to Dodge. The primary role served by the ECPET is management of the State Homeland Security Grant Program (SHSP) for the jurisdictions within its 10 counties. Through the ECPET, local and regional projects are identified and submitted for funding by the SHSP. Successfully funded projects will align with State and National Homeland Security priorities and are carried out by the Region for the benefit of each affected jurisdiction. Examples of recent ECPET projects benefiting Counties include:

⁵ <https://www.firstnet.gov/>

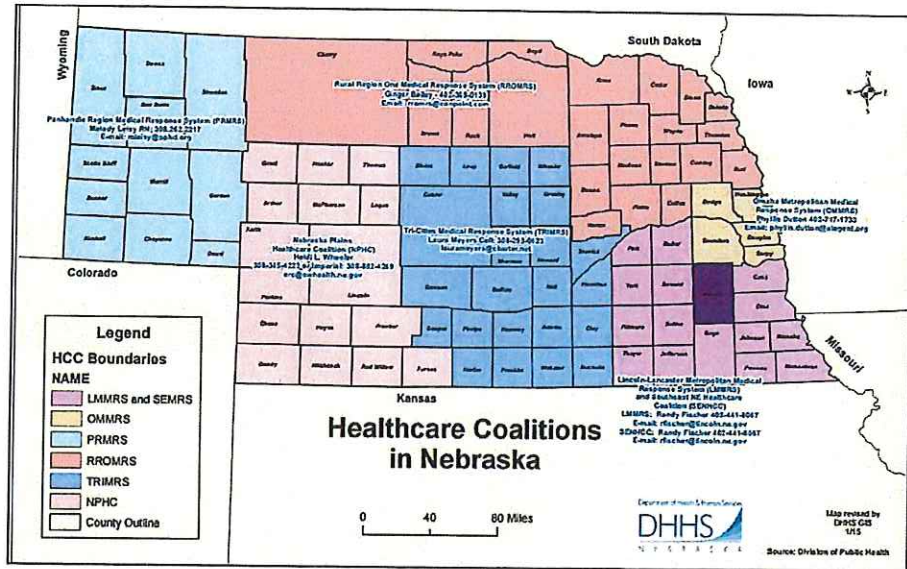
1. Purchase of Night Vision Goggles for County Sheriff's Office and the equipment building at the Boone County Tower Site.
2. Maintenance and rental costs for NRIN.
3. Law Enforcement tactical training, IMT position specific, exercise templates, and Advanced Professional Series Training Courses.
4. Purchase of equipment and software for ID credentialing and resource management through the Statewide Resource Manager program. The system allows local agencies to maintain an inventory of personnel, equipment and other resources with information regarding current training, credentialing, resource typing, and on-scene tracking.



Medical Response System

The Medical Response System (MRS) was created to enhance the State of Nebraska's ability to respond to emergent and public health situations that involve a large number of people and/or disruption of services⁶. MRS acts as a catalyst to facilitate communication and cooperation among entities, allowing them to better plan for and respond to these situations through collaboration of efforts. In addition, MRS provides resources for training, education, exercises and communication enhancement as well as development of Medical Reserve Corps and assistance in the development of protocols for responding to surge capacity situations. The State of Nebraska is divided into six MRS regions each with its own steering committee which sets the goals and activities largely based upon the unique needs of the region. Dodge County Emergency Management collaborates with Omaha Metropolitan Health Care Coalition (OMHCC) formally OMRRS.

⁶ [http://hptc.unmc.edu/nevolunteers/partners.htm#Nebraska Medical Response System](http://hptc.unmc.edu/nevolunteers/partners.htm#Nebraska%20Medical%20Response%20System)



Medical Response System Map

Local Emergency Planning Committee (LEPC)

Dodge County Emergency Manager services as the Information Coordinator, liaison to the State Emergency Response Commission (SERC)⁷, and fiscal agent for each County LEPC. The County LEPC is a gathering of representatives in the county that have an interest in hazardous materials safety. Members include representatives from the fire department, law enforcement, health care, schools, local industry, public health, others. As a group they identify potential risks that our community faces from hazardous chemicals stored in and/or transported around the community and assist in the updating and revision of the Local Emergency Operations Plan's (LEOP) Hazardous Materials Annex. The LEPCs seek ways to help minimize these risks, prevent accidents, and assist in the development of plans to deal with a chemical emergency. Another core component of an LEPC is public education. Through the LEPC, the public can seek out information about chemicals in their community and establish safety plans at home and in the workplace.



Citizen Corps Council & Long Term Recovery Group

The use of volunteers has proven critical to emergency management. Both individual volunteers and established volunteer groups offer a wealth of skills and resources that can be used prior to, during, and after an emergency. Mobilizing the private sector can add significantly to emergency management programs. An important factor following a disaster; FEMA allows sub-grantees (city / town) to utilize volunteer time and donated resources to offset the local disaster cost share (normally 25%) up to 100% of the disaster costs. In January 2019, Dodge County Emergency Management Coordinated with Corporation for National and Community Service to train local volunteers on how to organize volunteers following a disaster. The training was conducted March 8th, 2020.

⁷ <https://nema.nebraska.gov/tech-hazard/serc-state-emergency-response-commission>

In appreciation of their efforts, Dodge County Emergency Management submitted four Dodge County Resident applications for their outstanding efforts during the 2019 flooding to the State's ServeNebraska Step Forward Awards. The ServeNebraska Step Forward Awards recognizes these outstanding people and groups for their time and service. Two residents received awards for disaster volunteer and community media partner.



Figure 4: Nathan Arneal and Kathy Kneifl

Greater Dodge County-Long Term Recovery Group (GDC-LTRG)

The GDC-LTRG sets forth these operational procedures to establish and maintain a network within and on behalf of the faith-based, non-profit, governmental, business and other organization and agencies which will provide a coordinated recovery effort to the March 2019 flooding affecting Dodge and Washington counties. Regular meetings also allow for members to introduce themselves to each other and define their resources capable of supporting recovery efforts. A portion of the Group has transitioned into a COVID-19 Community Task Force to help those suffering during the COVID-19 Pandemic.

Citizen Corps Council (CERT)

Following a major disaster, first responders who provide fire and medical services will not be able to meet the demand for these services. Factors such as number of victims, communication failures and road blockages will prevent people from accessing emergency services they have come to expect at a moment's notice through 911. People will have to rely on each other for help in order to meet their immediate lifesaving and life sustaining needs⁸. The Dodge County Citizen Corp was formed to bring the different disaster volunteer organizations together in an organized structure. Organizations part of the Citizen Corp Council are;



Pioneer Amateur Radio Club-Amateur Radio Emergency Services (ARES)	Dodge County Community Emergency Response Team (CERT)
Civil Air Patrol-Fremont Wing	First Lutheran Shelter Team
Radio Emergency Associated Communication Teams (REACT)	Community Member-Three Rivers Public Health Department



In 2020, Dodge County CERT program began its second year into the program plan. The CERT team trains monthly on activities to assist in developing core capabilities. CERT volunteers are issued emergency gear, participate in additional training and exercise opportunities, and are available for deployment in an incident. Dodge County is the East Central PET Region's representative on the State Citizen Corp Council and writes the East Central Region Homeland Security Project Investment Justification to support

⁸ <https://www.fema.gov/about-community-emergency-response-team>

the PET region's volunteer programs. Currently the CERT team has 20 active members. These volunteers have done various missions during the flooding and COVID-19 to include drone flights, warehouse distribution, and damage assessments.

Trainings completed by Dodge County CERT

- Rapid TAG/ID System
- START Triage
- Orion Damage Assessment
- ICS/NIMS
- Leveraging and Cribbing
- Evaluating Victim
- EOC/ICS Interface





DODGE COUNTY
EMERGENCY
MANAGEMENT

Three gold stars are positioned below the text, within the blue outline of the county.